



Feline Positioning Guide

There are many Feline Positioning Guides available, all using different techniques. There are Veterinary Dental Specialists that use lateral recumbancy, some sternal and dorsal recumbancy and others that use bisecting angles. This Guide is the method that I use to teach positioning and how I am able to get the best diagnostic images in the shortest period of time.

I advise veterinary clinic staff members to research the different techniques and choose the method that is most understandable and results in the best diagnostic images.

Danielle Heberle CVT

Progeny - *A Midmark Company*

National Veterinary Sales Representative

Maxilla

Sensor Placement:



Place sensor face up, parallel to the palate, as far back in the mouth as it will go. The sensor will remain in the same position for all of the maxillary radiographs.

Maxillary Incisors

Tube head angle is 60 degrees and placed over the nose (about 1 inch away from the patient).

IMAGE VIEW





You can capture the three left incisors and left canine and three right incisors and right canine, separately, to get a more oblique view of the canine tooth. The angle on the tube head will be 60 degrees.

IMAGE VIEW



Maxillary Premolars

Sensor Placement



Sensor Placement: Sensor to be placed diagonally in the patient's mouth.



Tube Head Placement



Tube Head angle is set to 30 degrees. Place tube head over the eye to shoot through the eye. By using this technique you should avoid the zygomatic arch sitting heavy on top of the roots.



Image View



Note: This 3 year old patient has bilateral supernumery roots on tooth 107 and 207.

Mandible Incisors and Canines

You can take an image of all 6 incisors and both canines on one view

Sensor Placement



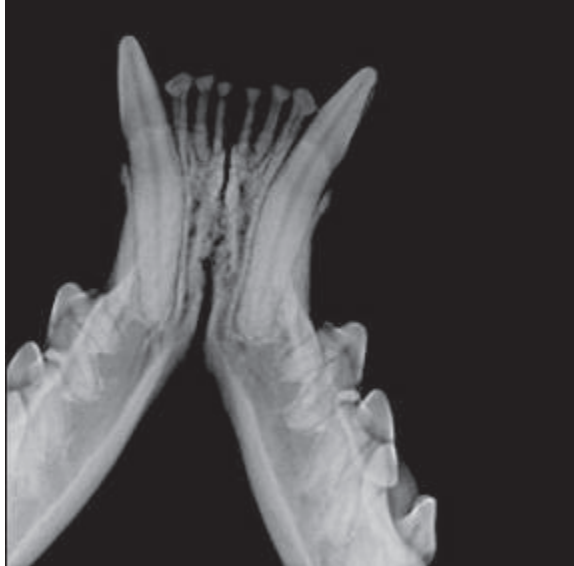
Place the sensor in the mouth as far back as it will allow.

Tube Head Placement



60 degree angle on the tube head

IMAGE VIEW



Mandibular Premolars and Molar
Sensor Placement



Keep sensor in the same place as for the mandibular incisors and canines.

Tube Head Placement



Tube head is around a 60 degree angle and obliqued to left and right side to capture all premolars and molar.

You can also do a parallel technique.

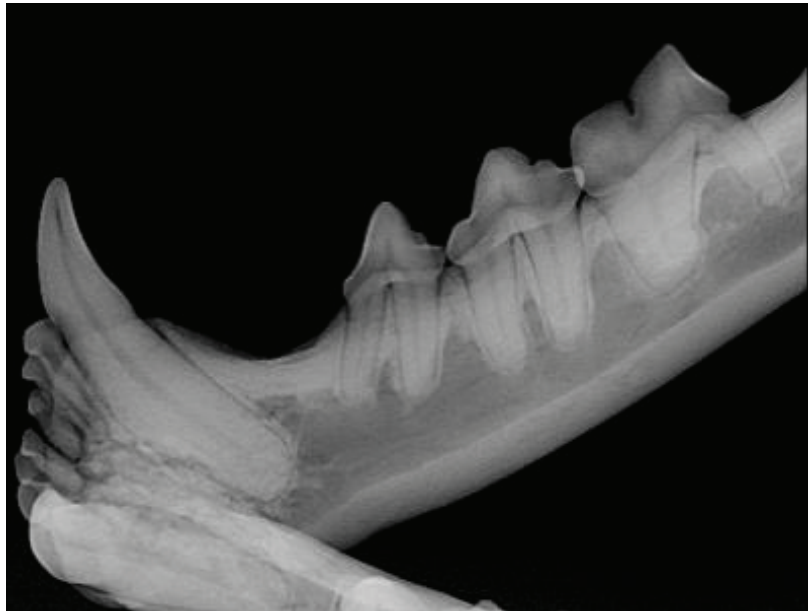
Sensor Placement



Tube Head Placement



IMAGE VIEW





675 Heathrow Drive • Lincolnshire, IL 60069 • USA
847-415-9800 • 847-415-910 fax

www.progenyvetimaging.com

Made in the USA