

EzRay Vet™ Cart

Smart Essentials For Your Clinic

Mobile Cart Intraoral X-Ray

- 5.3 lb lightweight tube head for stable and safe use
- Smart angulations for optimal results
- Intuitive and convenient operating panel
- Ergonomic design for easy use



Ergonomic Design

Lightweight Construction



Streamlined Mobile X-Ray

EzRay Vet Cart satisfies primary dental diagnostic needs by creating a efficient workflow and optimized X-ray source for the clearest possible image.

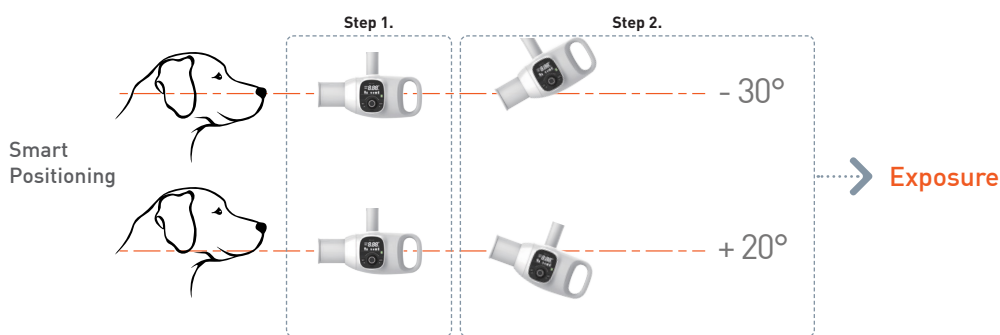


Smart angulations for optimal results

X-ray operators rarely change the exposure time of their wall-mounted X-rays to the optimal level for a desired shot type. The EzRay Vet Cart automatically can determines optimal exposure settings for a clear image based on the angle of the device.

Step 1. Set the reference point.

Step 2. Exposure conditions for each tooth are set automatically by the specified angle.



Supported Positions: Incisors, Canine, Premolars, Molars



One dial for all functions

The operating panel located on the tube head creates a simpler and faster workflow. The Smart Dial has all the settings in one dial, streamlining the workflow and decreasing preparation time. There is no need to remember complicated controls panel buttons and configurations.



Lightweight for safe and easy use

A light wall-mounted intraoral X-ray creates a stable condition for safe and easy use.

The 5.6 lbs lightweight tube head makes it easy to handle and position, producing a faster workflow for your staff.

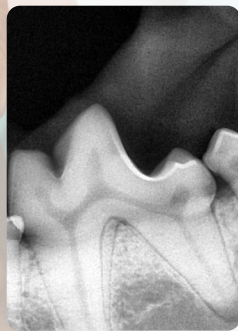


Ergonomic Patient Design



Acquire clear images with a **0.4mm focal spot**

Regardless of which intraoral sensor you use, the EzRay Air minimizes blur and provides additional diagnostic value with a 0.4mm focal spot.



Ergonomic design for safety and efficiency



[Round Shape Design]

The EzRay Cart Vet adds a modern and esthetic touch to your clinic.

[Strong & Stable Arm]

The strong and stable X-ray unit arm allows accurate positioning of 5.6 lbs lightweight tube head, aiding in providing distortion-free images.

[Ergonomic One-Handed Grip]

One-hand operation provides an easy method of positioning and controlling the EzRay Vet quickly and accurately.

[Mobile Cart base]

The mobile system provides space efficiency while locking securely into position.

Specifications

Focal Spot	0.4 mm (IEC 60336)
Tube Voltage (kV)	65 kV
Current (mA)	3.0 mA
Exposure Time Range	0.05 ~ 0.5 (0.01s increment)
Source to Skin Distance	Min. 7.9 in (200 mm)
X-Ray Field	Default : 2.4 in (60 mm) Round, 1.2 x1.6 in (30x40 mm) Rectangular Optional : 0.8x1.2 in (20x30 mm) Rectangular
Arm Arch Length [Max.]	56.9 in (1,444 mm)
Accessories	Remote Exposure Switch (Hand Switch / Doorbell Switch)
Height	74.5 in (1,893 mm)
Width	26 in (660 mm)
Weight	less than 176 lbs (80kg)
Cart Stand Height	45.8 in (1,155 mm)
Arm Length	28.2 in(716 mm), 29.3 in (738 mm) - (Including Joints)

* Specifications are subject to change without prior notice.