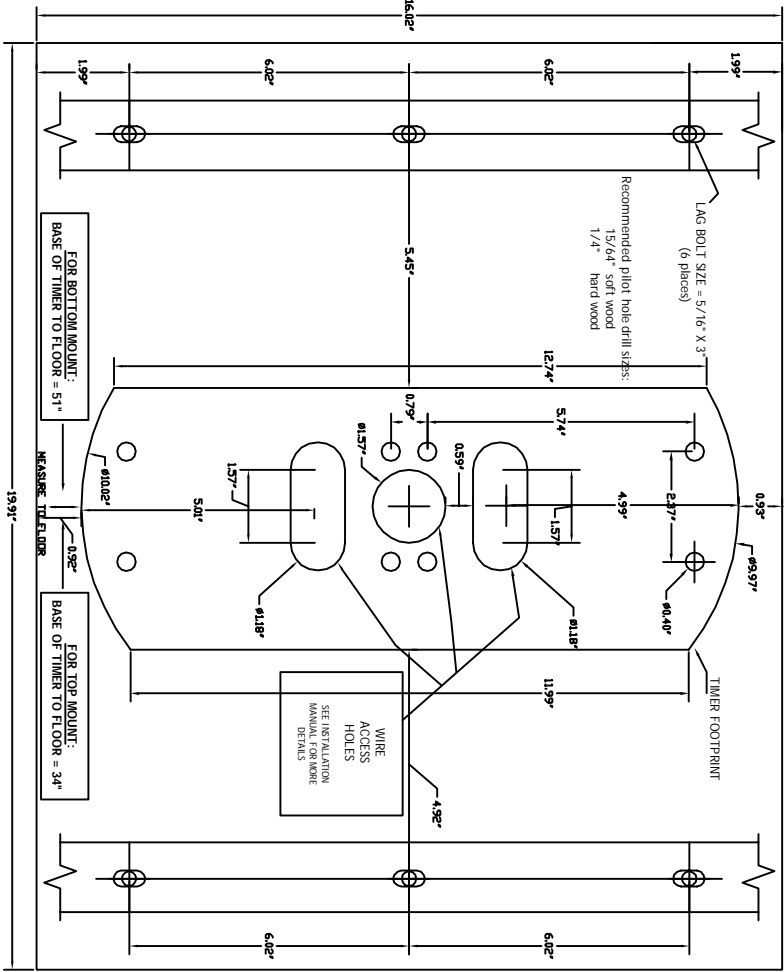


HORIZONTAL MOUNT LENGTH	A	B	C	D
48" (1219 mm)	31" (787 mm)	31" (787 mm)	48" (1219 mm)	48" (1219 mm)
60" (1524 mm)	31" (787 mm)	31" (787 mm)	60" (1524 mm)	60" (1524 mm)
72" (1829 mm)	31" (787 mm)	31" (787 mm)	72" (1829 mm)	72" (1829 mm)
84" (2134 mm)	31" (787 mm)	31" (787 mm)	84" (2134 mm)	84" (2134 mm)
96" (2439 mm)	31" (787 mm)	31" (787 mm)	96" (2439 mm)	96" (2439 mm)
108" (2744 mm)	31" (787 mm)	31" (787 mm)	108" (2744 mm)	108" (2744 mm)
120" (3049 mm)	31" (787 mm)	31" (787 mm)	120" (3049 mm)	120" (3049 mm)



**TWO STUD (16") MOUNT ONLY**

**WARNING!** THIS INSTALLATION MUST BE PERFORMED BY A LICENSED CONTRACTOR ONLY! UNDER NO CIRCUMSTANCES SHOULD THIS WALL PLATE BE ATTACHED TO ANY WALL USING THE SINGLE STUD CONFIGURATION METHOD.